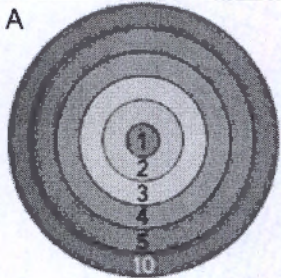
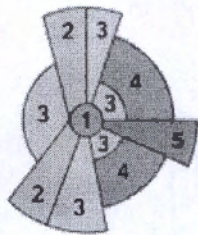
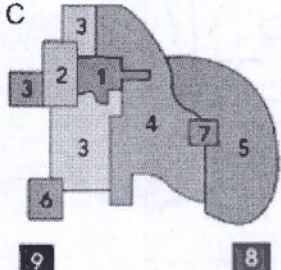


Section F: Urban Theories and Development

3m

1. Study the figures A–C below: Urban development models. The numbers and shades refer to different land uses. Describe the urban development in each of the 3 models.

Urban development model	Description of urban development
<p>A</p> 	
<p>B</p> 	
<p>C</p> 	

(<https://www.khanacademy.org/test-prep/mcat/social-sciences-practice/social-science-practice-tut/e/social-structures---passage-1>).

2m

2. Study Resource Booklet Figure F1: A photo of Barcelona, Spain.
 a) Which area/zone (1–10) in the urban development models (see previous question) does this picture correspond to?
 b) What are 3 main characteristics of this area/zone?

a)

b) Characteristic 1:

Characteristic 2:

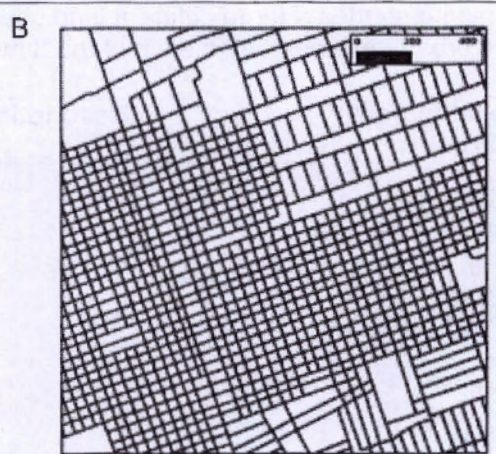
Characteristic 3:

2m

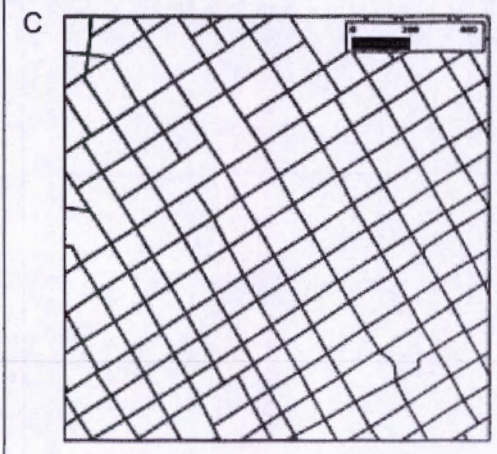
3. Study Resource Booklet Figure F2: Urban "fingerprints".
Match the street block layouts (A, B, C and D) with the corresponding urban "fingerprints" graphs (1, 2, 3 and 4).



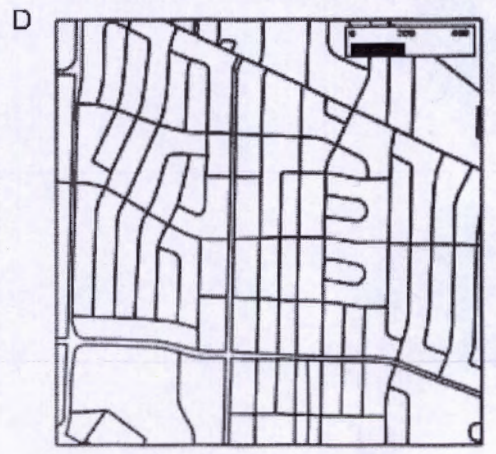
Street block layout A corresponds to
fingerprint graph no.:



Street block layout B corresponds to
fingerprint graph no.:



Street block layout C corresponds to
fingerprint graph no.:



Street block layout D corresponds to
fingerprint graph no.:

This Section continues on the next page.